

# KARIBAN

**REFERENCE :** KV2306

**SIZES :** S\_M\_L\_XL\_XXL\_3XL

**COMPOSITION :**

Main fabric : Peached and brushed Cotton / Polyester fleece  
80/20 - 350 For main fabric, hood lining and hood binding. 80% cotton / 20%polyester

Main fabric : Peached and brushed Cotton / Polyester / Viscose  
fleece 79/20/1 - 350 For main fabric, hood lining and hood  
binding. 79%cotton/20%polyester/1%viscose

**WEIGHT :**

Main fabric : 350 gsm

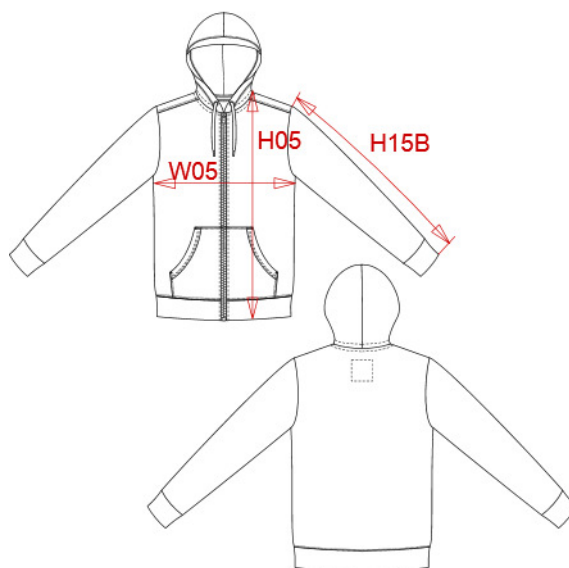
Main fabric : 350 gsm

**TECHNICAL DETAIL :**

Peached finish

**ARTICLE WEIGHT :**

860 gr/pc



DESCRIPTION
<b>Français :</b> Sweat-shirt vintage zippé à capuche homme
<b>English :</b> Men's vintage zipped hooded sweatshirt
<b>Nederlands :</b> Vintage herensweater met rits en capuchon
<b>Deutsch :</b> Herren Kapuzensweatshirt mit Reißverschluss
<b>Español :</b> SUDADERA VINTAGE - CREMALLERA Y CAPUCHA para hombre
<b>Italiano :</b> Felpa uomo vintage full zip con cappuccio
<b>Português :</b> Casaco sweatshirt vintage de homem com capuz

COLORS	PANTONE SERIGRAPHIE
Vintage navy	533C
Vintage charcoal	447C
Vintage dark red	202C
Ash heather	Based on Warm gray 1C
Slub grey heather	Based on 7539C
Night blue heather	Based on 432C

MEASUREMENT						
Description	S	M	L	XL	XXL	3XL
<b>H05 (M)</b> Hauteur totale / Total height	71	73	75	77	79	81
<b>W05 (M)</b> 1/2 largeur poitrine à 1.5cm de l'emmanchure / 1/2 chest width at 1.5cm below armhole	52	55	58	61	64	67
<b>H15B (M)</b> Longueur manche avec poignet / Sleeve length with cuff	66,25	67,25	68,25	69,25	70,25	71,25

CARE LABEL

PACKING	
Box	16 pcs / box S => L:60cm W:40cm H:36cm GW:13.8kg NW:12.2kg M => L:60cm W:40cm H:36cm GW:14.8kg NW:13.2kg L => L:60cm W:40cm H:38cm GW:15.4kg NW:13.8kg XL => L:60cm W:40cm H:38cm GW:16kg NW:14.4kg XXL => L:60cm W:40cm H:40cm GW:16.4kg NW:14.8kg 3XL => L:60cm W:40cm H:40cm GW:17.5kg NW:15.9kg